

ADOLFO VENTAS

Profesor de Saxofón del Conservatorio
Superior Municipal de Música de Barcelona

ESCUELA MODERNA

para

SAXOFÓN
CROMATISMOS

(para Saxofón u oboe)

CASA EDITORIAL DE MÚSICA
BOILEAU

Provenza, 287 - Teléfono 215 53 34
08037 - BARCELONA

Escuela moderna del Saxofón

CROMATISMOS

Para Saxofón u Oboe

ADOLFO VENTAS

Profesor de Saxofón del
Conservatorio Superior Municipal
de Música de Barcelona

1

2

Propiedad del Editor para todos los paises

EDITORIAL BOILEAU - BARCELONA

© Copyright 1980 by A.Ventas

2429

Depósito legal B. 4730-1980

3

Todos los ejercicios escritos en compás $\frac{6}{4}$ deberán trabajarse en ritmo binario y ritmo ternario.

4

This image shows a musical score for guitar, consisting of ten staves of music. The notation is in treble clef and includes various chords and melodic lines. A large, semi-transparent watermark 'ESR' is overlaid diagonally across the center of the page, covering several staves. The score is organized into two systems of five staves each. The first system starts with a treble clef and a key signature of one flat (B-flat). The second system begins with a measure number '5' and a key signature change to one sharp (F#). The third system begins with a measure number '6' and a key signature change to two sharps (C# and F#). The music features complex chordal textures and melodic patterns, with some notes marked with accidentals (sharps, flats, and double flats).

103

104

105

This page contains musical notation for measures 103, 104, and 105. The notation is written on a single staff in treble clef with a common time signature (C). Measure 103 begins with a treble clef and a common time signature. It features a series of eighth and sixteenth notes, many of which are beamed together and have slurs above them. There are several accidentals, including sharps and flats, scattered throughout the measure. Measure 104 continues the melodic line with similar rhythmic patterns and accidentals. Measure 105 concludes the sequence with a final note and a fermata. The entire score is overlaid with a large, semi-transparent watermark that reads 'SAMPLE' in a stylized font.

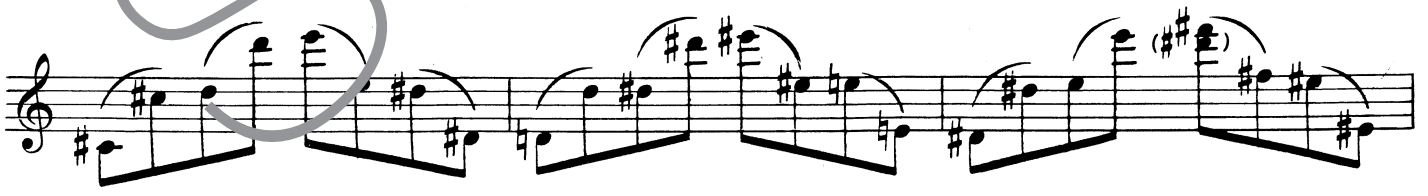
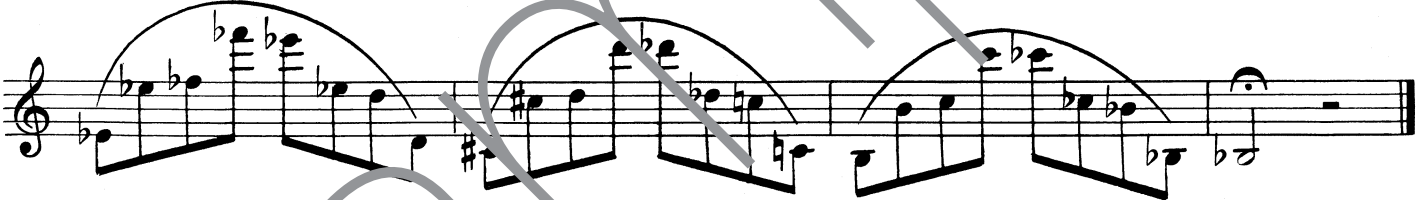
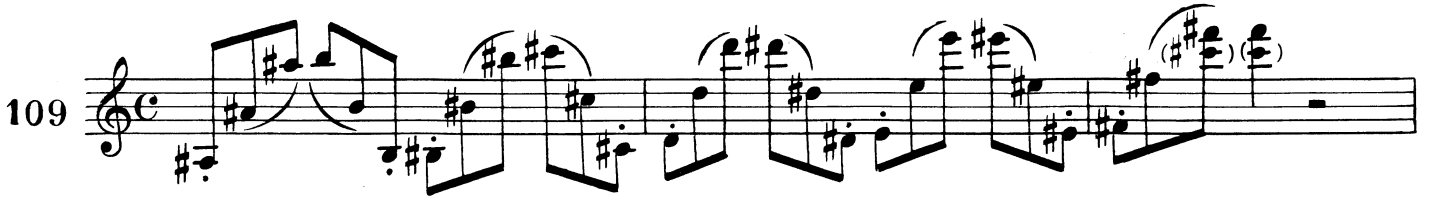
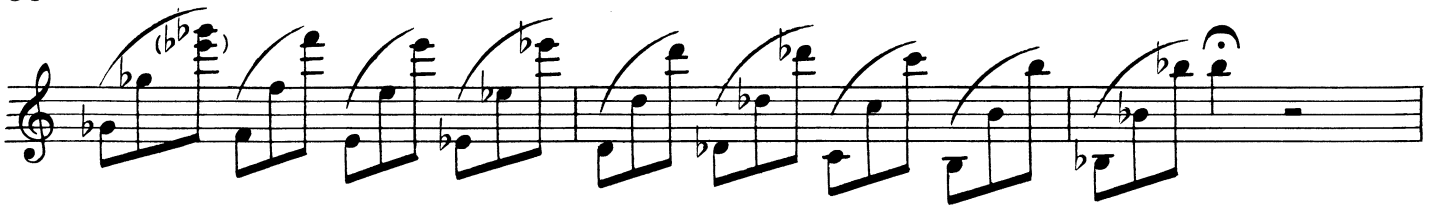
Two staves of musical notation. The first staff (measure 104) is in treble clef with a key signature of one sharp (F#) and a common time signature (C). It contains a sequence of eighth and sixteenth notes with various accidentals (sharps and naturals). The second staff (measure 105) is in treble clef with a key signature of two flats (Bb, Eb) and a common time signature (C). It contains a sequence of eighth and sixteenth notes with various accidentals (flats and naturals).

Two staves of musical notation. The first staff (measure 106) is in treble clef with a key signature of one sharp (F#) and a common time signature (C). The second staff (measure 107) is in treble clef with a key signature of two flats (Bb, Eb) and a common time signature (C). Both staves contain complex rhythmic patterns with many accidentals.

Two staves of musical notation. The first staff (measure 108) is in treble clef with a key signature of one sharp (F#) and a common time signature (C). The second staff (measure 109) is in treble clef with a key signature of two flats (Bb, Eb) and a common time signature (C). Both staves contain complex rhythmic patterns with many accidentals.

Two staves of musical notation. The first staff (measure 110) is in treble clef with a key signature of one sharp (F#) and a common time signature (C). The second staff (measure 111) is in treble clef with a key signature of two flats (Bb, Eb) and a common time signature (C). Both staves contain complex rhythmic patterns with many accidentals.

One staff of musical notation (measure 112) in treble clef with a key signature of one sharp (F#) and a common time signature (C). It contains a sequence of eighth and sixteenth notes with various accidentals.



The image displays a page of musical notation for guitar, consisting of ten staves. The notation includes various chords, melodic lines, and articulation marks such as slurs and accents. A large, semi-transparent watermark 'S' is overlaid diagonally across the entire page. The first staff begins with a treble clef and a key signature of one flat. The second staff is marked with the number '112' at the beginning. The music is written in a style typical of guitar sheet music, with many notes beamed together and some chords indicated by a 'b' symbol.